

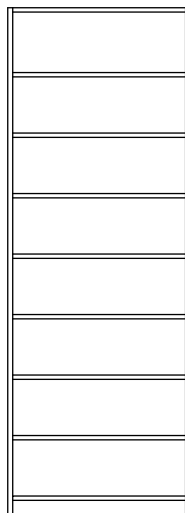
På vår hemsida [www.olofnilson.se](http://www.olofnilson.se) kan du se specifikation på resp. sektion samt skriva ut skalenlig ritning för att bygga din Monté.

## Monté-sektioner

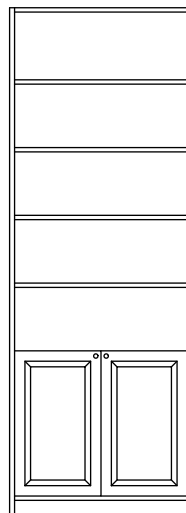
höjd 234cm



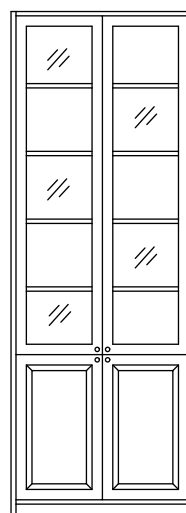
101-00



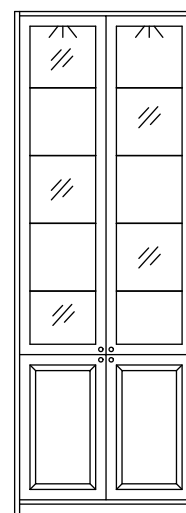
101-01



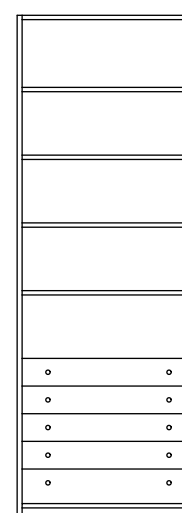
101-02



101-03



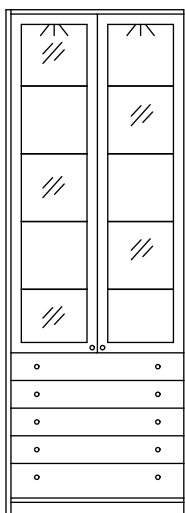
101-04



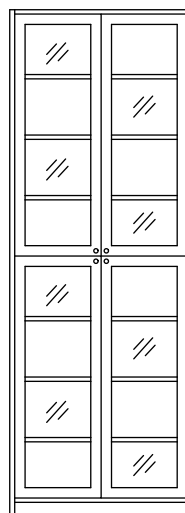
101-05



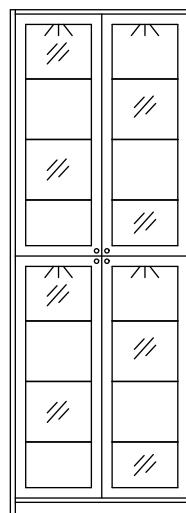
101-06



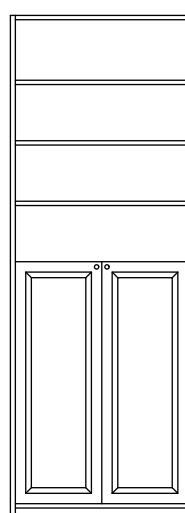
101-07



101-08



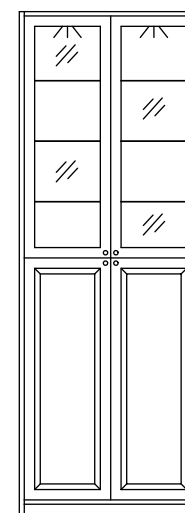
101-09



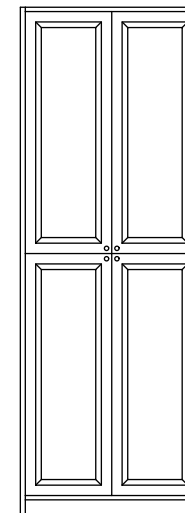
101-10



101-11



101-12



101-13

# Monté-sektioner

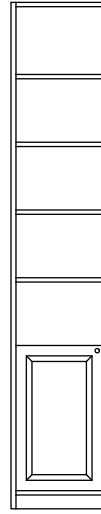
höjd 234cm



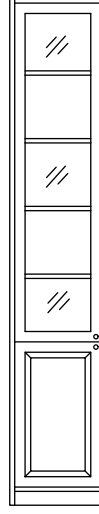
102-00



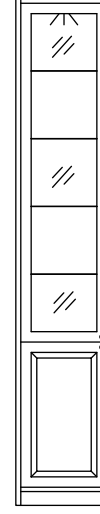
102-01



102-02



102-03



102-04



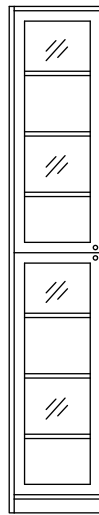
102-05



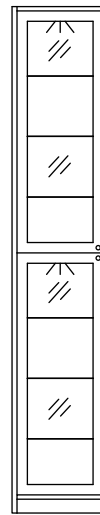
102-06



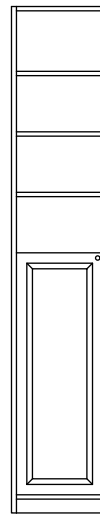
102-07



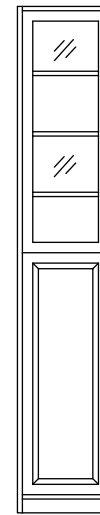
102-08



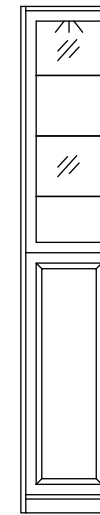
102-09



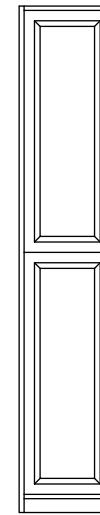
102-10



102-11



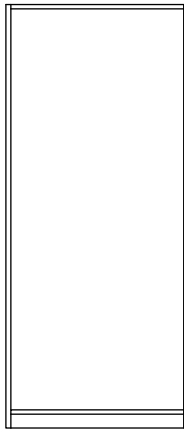
102-12



102-13



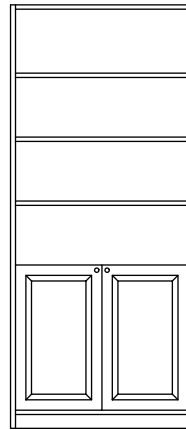
avslutningssida 1



201-00



201-01



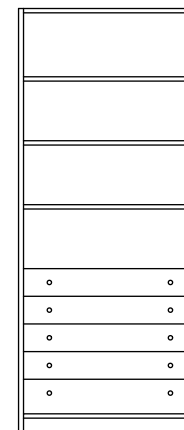
201-02



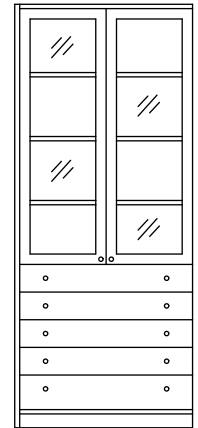
201-03



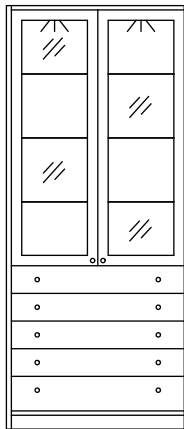
201-04



201-05



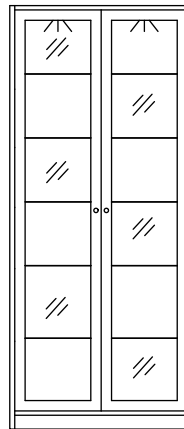
201-06



201-07



201-08



201-09



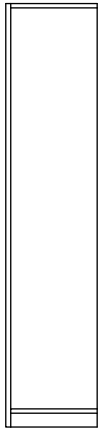
201-10



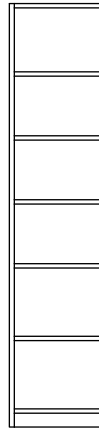
201-11



201-12



202-00



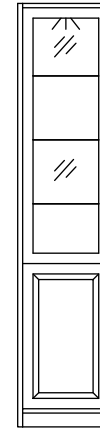
202-01



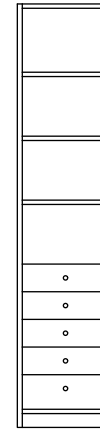
202-02



202-03



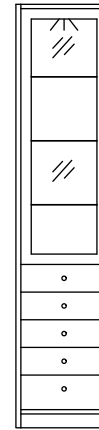
202-04



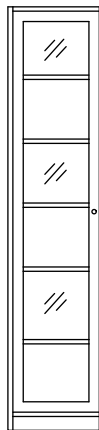
202-05



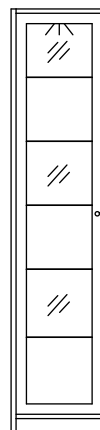
202-06



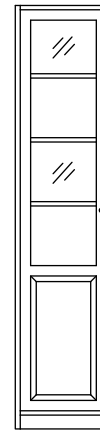
202-07



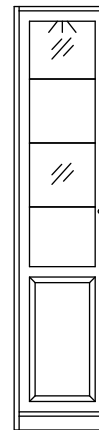
202-08



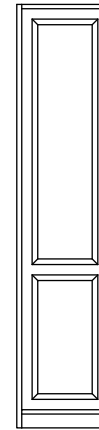
202-09



202-10



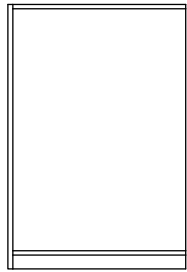
202-11



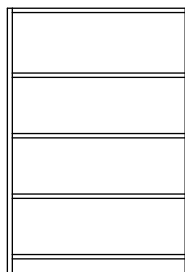
202-12



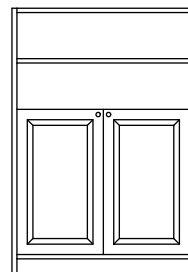
avslutningssida 2



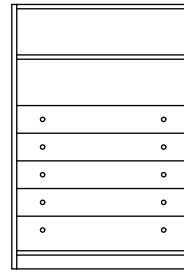
301-00



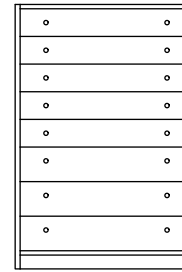
301-01



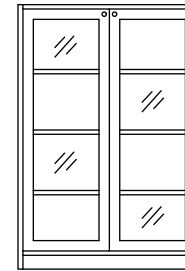
301-02



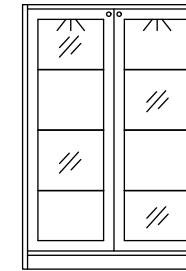
301-03



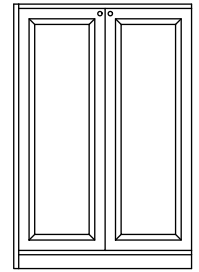
301-04



301-05



301-06



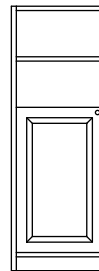
301-07



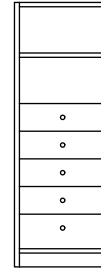
302-00



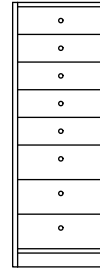
302-01



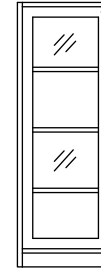
302-02



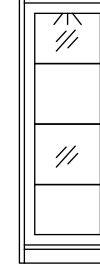
302-03



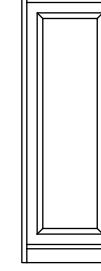
302-04



302-05



302-06



302-07

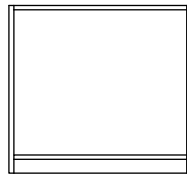


avslutningssida 3

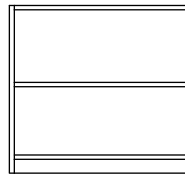
(Toppskiva tillkommer på höjd 125cm och 80cm)

# Monté-sektioner

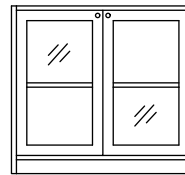
höjd 80cm



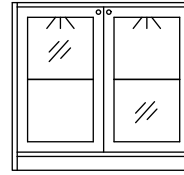
401-00



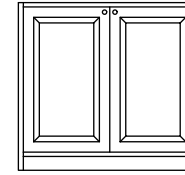
401-01



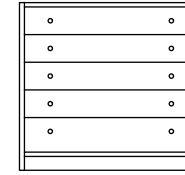
401-02



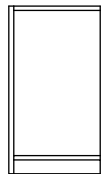
401-03



401-04



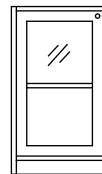
401-05



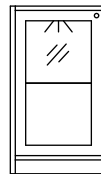
402-00



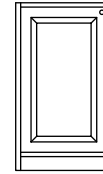
402-01



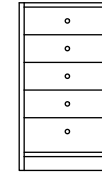
402-02



402-03



402-04



402-05



avslutningssida 4

(Toppskiva tillkommer på höjd 125cm och 80cm)

## Exempel hur en Monté-kombination byggs upp steg för steg.

### Steg 1.

Välj sektioner.  
Lägg till avslutningssida.

not:

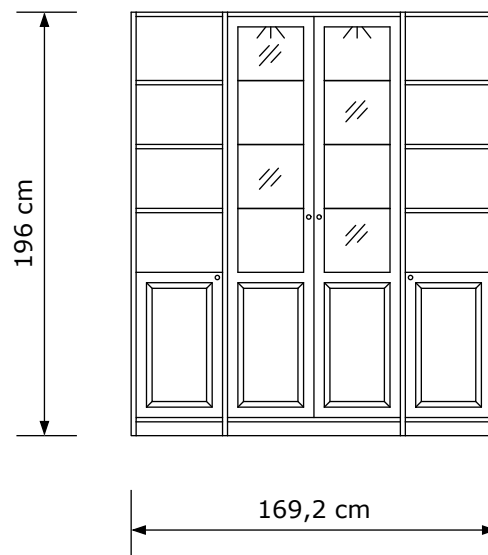
234-höjd - Ingen toppskiva  
196-höjd - Ingen toppskiva  
125-höjd - Toppskiva tillkommer  
80-höjd - Toppskiva tillkommer



### Steg 2.

Lägg ev. till eller dra ifrån hyllplan.  
Välj klassisk eller slät dörrfyllning.

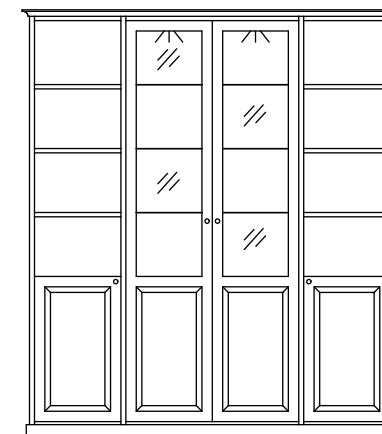
Möbeln är nu komplett.  
Gå ev. vidare till Steg 3



2st Stomme 202  
1st Stomme 201  
1st Sida 2  
10st Hyllplan nr 17 trä  
2st Hyllplan nr 15 trä  
3st Hyllplan nr 15 glas  
2st Låga dörrar nr 60 trä  
2st Höga dörrar nr 81 trä/glas  
1sats Belysning med 2 spot

### Steg 3.

Lägg till krön- och/eller sockellist.  
Byt ev. ut träknopparna till borstat stål.



1 sats Krön- och sockellist nr 291  
(Krön listen bygger 3,5cm på resp. sida  
och 3cm på höjden)